



Sagem Défense Sécurité
SAFRAN Group

MorphoAccess™ 100 Series

Configuration Tool User Guide

Produced by SAGEM Défense Sécurité

Copyright ©2006 SAGEM Défense Sécurité

www.sagem.com

MA100 Series Configuration Tool User Guide

July 2006
SK-36539-02

Table of content

INTRODUCTION	3
STARTING THE APPLICATION	4
CONNECTION	4
CONNECTION ISSUES NOTE	5
<i>TERMINAL CONFIGURATION FILE GROUP BOX</i>	7
INTRODUCTION	7
CONFIGURATION INTERFACE	7
CONFIGURATION ORGANIZATION	7
FILE SELECTION	7
OPERATIONS	8
CHANGING A PARAMETER	8
DISPLAYING OR SAVING A TERMINAL CONFIGURATION FILE	10
<i>ADDITIONAL OPERATIONS GROUP BOX</i>	13
INTRODUCTION	13
ADDITIONAL OPERATIONS	13
<i>TERMINAL DATE</i> GROUP BOX	13
REBOOT TERMINAL	14

INTRODUCTION

MA1xx can be fully administrated through TCP/IP. The terminal acts as a server allowing:

- changing some terminal parameters,
- displaying or saving a terminal configuration file,
- additional operations (only setting or getting the terminal date for the current version),
- rebooting the terminal.

These operations require to connect the terminal on a network (TCP-IP).

All these features will be performed by the **Configuration Tool** application and are described in this present document.

STARTING THE APPLICATION

Connection

Launch the *Configuration Tool.exe* application. The *MA2G Connection* dialog window displays :

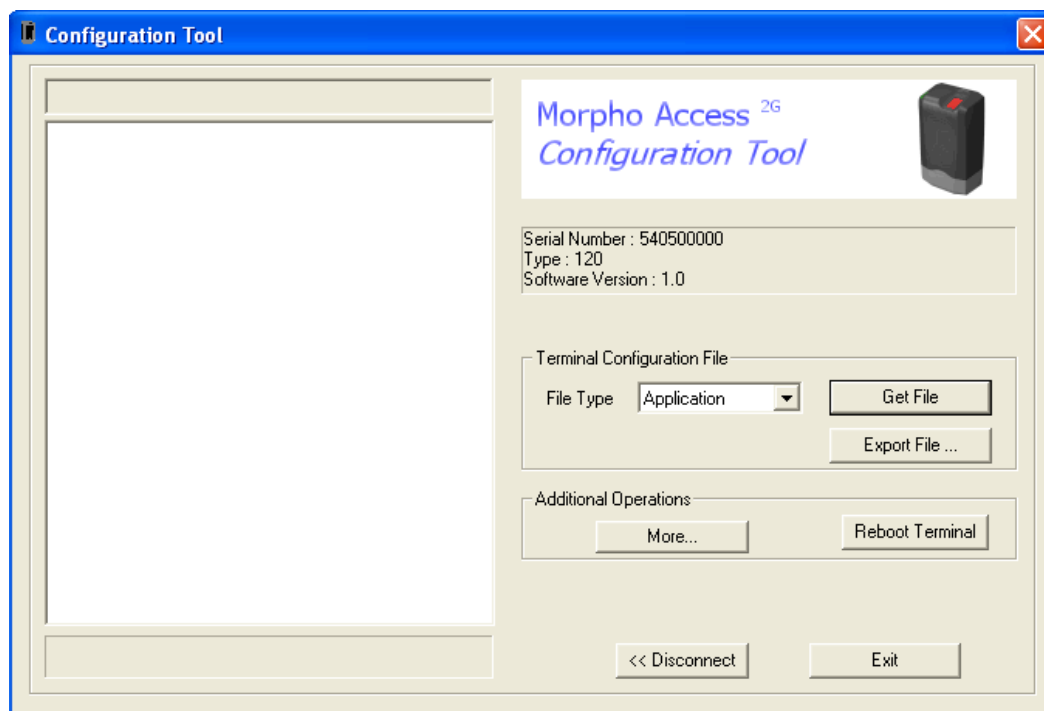


This step consist in connecting to your terminal on a network and it is required before performing any operation.

The process is the following :

- Connect physically your terminal on a network,
- Set the terminal IP address in the IP address field, (Default IP address from factory setting is : 134.1.32.214)
- Set the remote management TCP Port in the Port field,
- Click on the *Connect >>* button

If the process succeeds, the *Configuration Tool* main dialog window appears on your screen :



You can now perform an operation described in this document.

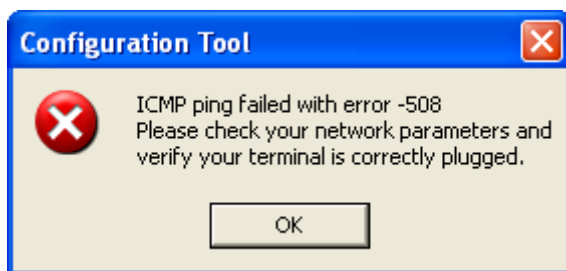
Connection issues note

Take notes the remote management TCP Port if you change its value. In fact, there is no tool to reset this value, so if you do not remember the right value, you could not connect your terminal later.

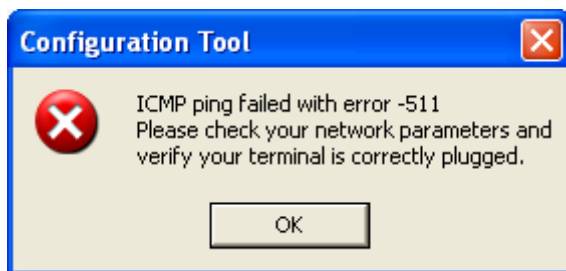
If the TCP port value is wrong, you obtain the following message :



The set IP address must be the actual address of your terminal. If you have previously changed this address by this tool or by an other, you must enter this last address. If these conditions are not respected, the following message displays on your screen :



A similar message also appears if your terminal is not connected on a network :



In all these cases, the application is still active and you can retry to connect your terminal on a network.

TERMINAL CONFIGURATION FILE GROUP BOX

Introduction

Configuration interface

Terminal parameters are stored in files. These configuration files can be retrieved and modified through TCP using ILV commands. For more information about configuration files and parameters please refer to *MA1XX UserGuide*.

Configuration organization

The terminal contains four files:

- app.cfg.
- adm.cfg.
- bio.cfg.
- net.cfg

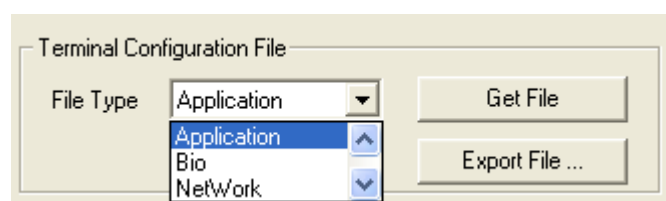
The *app.cfg* file contains the application settings, *adm.cfg* contains administration parameters, *bio.cfg* the biometric sensor settings and *net.cfg* Ethernet parameters.

Parameter path has the following structure *file_name/section/parameter*.

For example the relay activation is driven by the *app/relay/enabled* parameter.

File selection

Under the *Terminal Configuration File* group box, you can find a list box named *File Type* :



This list contains the corresponding names of the terminal configuration files :

Application ↔ app.cfg

Administration ↔ adm.cfg

Bio ↔ bio.cfg

Network ↔ net.cfg

Operations

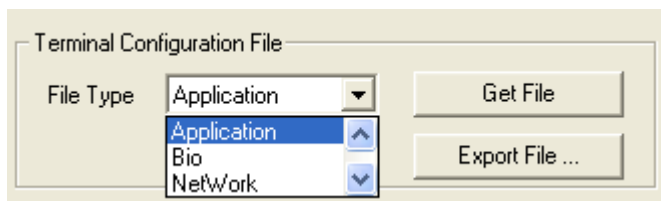
The *Terminal Configuration File* group box allows performing some operations on the terminal configuration files :

- changing one or several terminal parameters,
- displaying or saving a terminal configuration file.

Changing a parameter

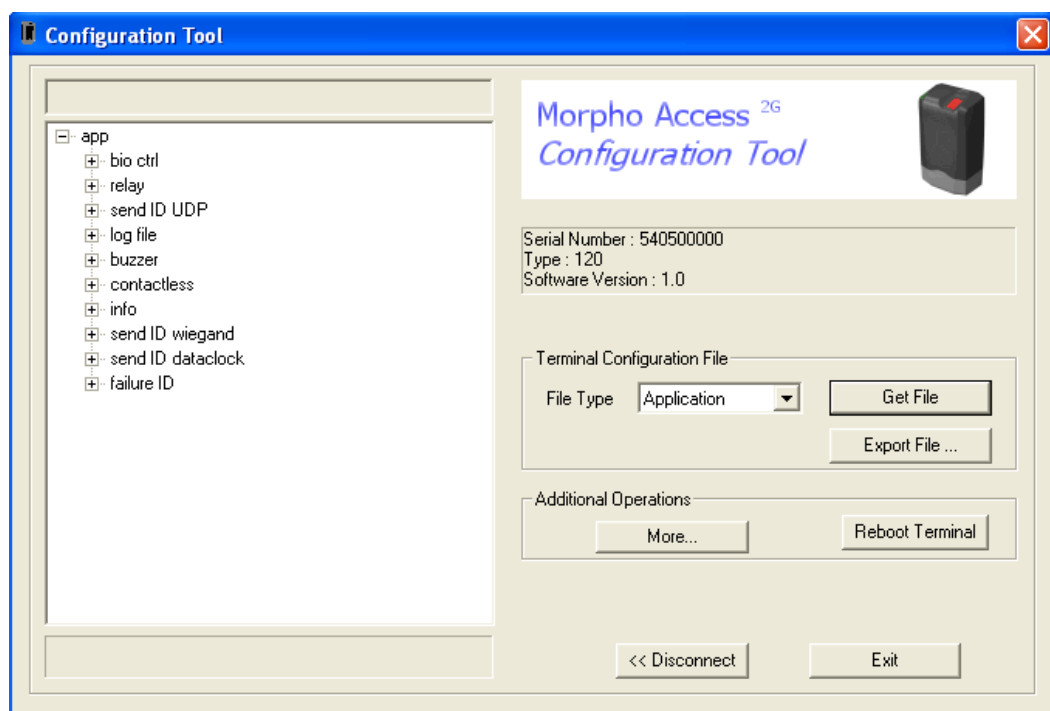
The process is the following :

- Select a terminal configuration file in the *File Type* list box :

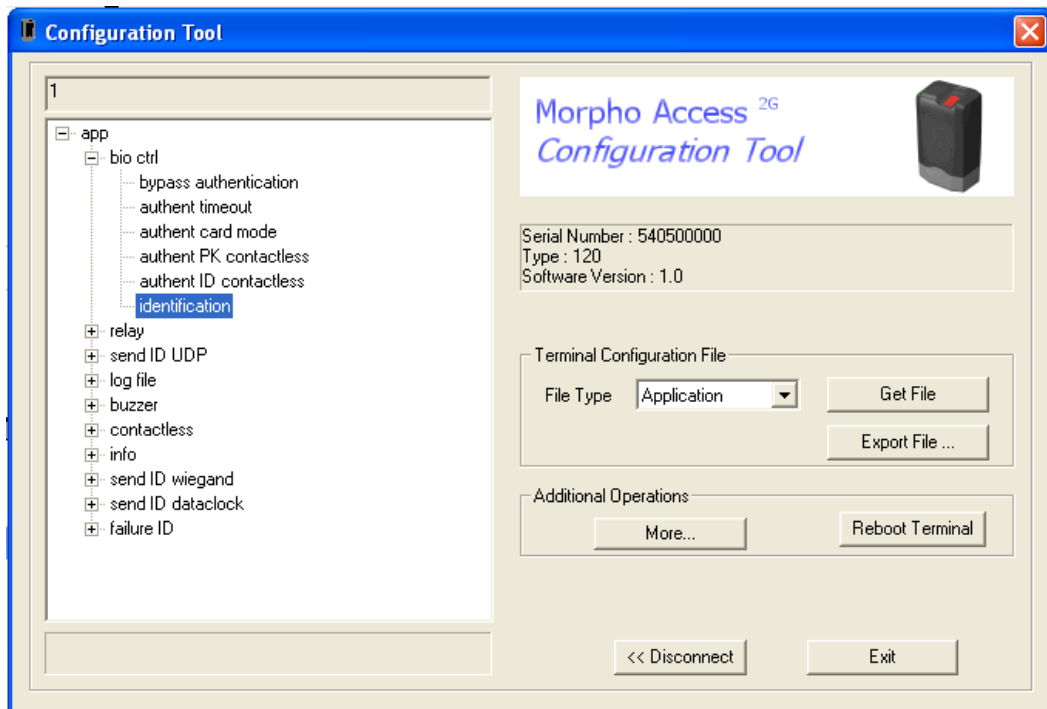


For example, we choose the *Application* configuration file.

- Retrieve the configuration file by clicking on the *Get File* button. The different file sections will display on the left part of the application :

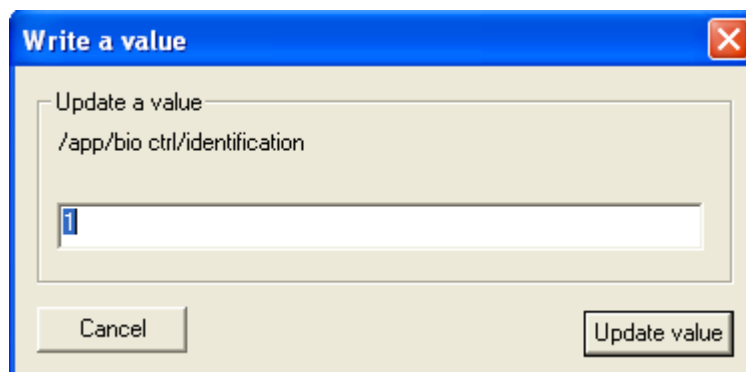


- Select a specific parameter by clicking first on the '+' of the specific section and then clicking on the parameter :

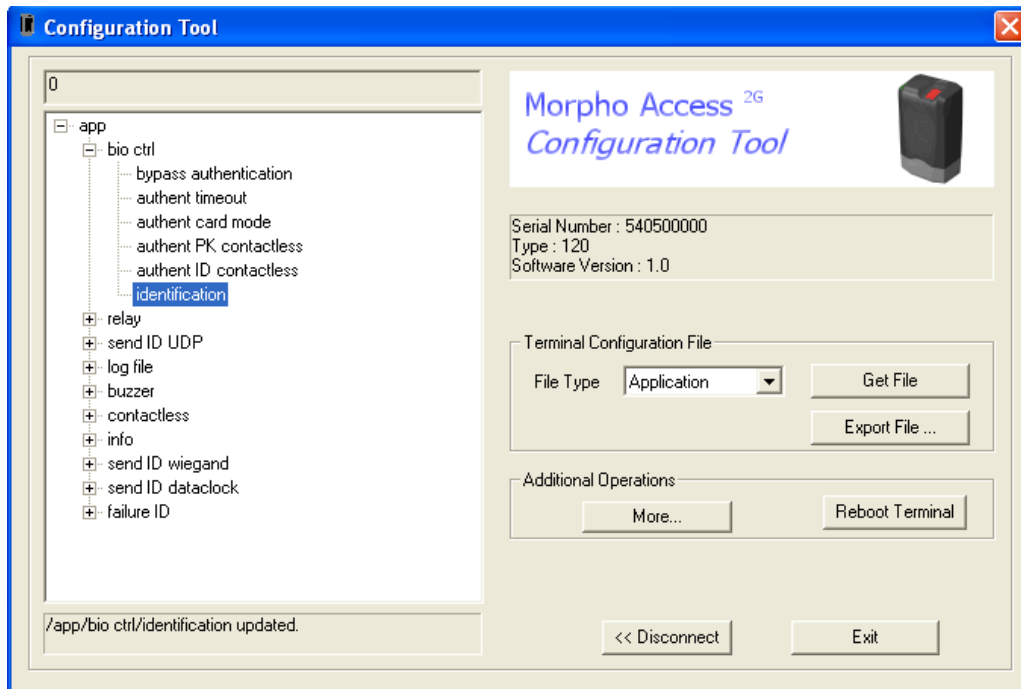


For example, we choose the *identification* parameter of the *bio ctrl* section.

- To change this parameter, double click on the parameter. The *Write a value* dialog window appears on your screen :



- Change the value of the parameter in the *Update a value* field and then click on the *Update value* button. For example, we set the *identification* parameter value to 0.
- If the process succeeds :
 - o the new value of the parameter displays in a field above the file sections
 - o a “file_name/section/parameter updated” message displays under the file sections.



If a value is erroneous, a message appears and the parameter is reset to its default value :

Erreur ! Des objets ne peuvent pas être créés à partir des codes de champs de mise en forme.

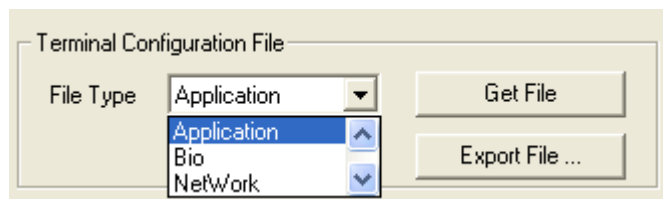
This default value also displays in the field above the file sections.

For some parameters (like network parameters) you need to reboot your terminal to apply the changes.

Displaying or saving a terminal configuration file

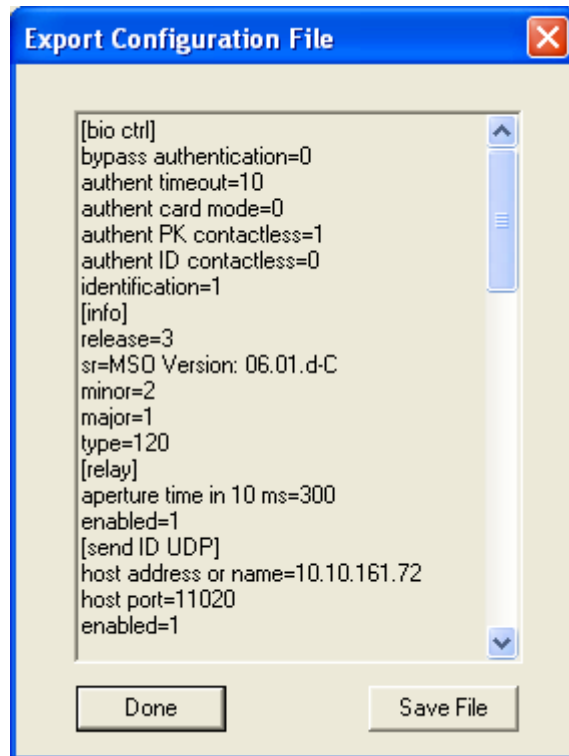
The process is the following :

- Select a terminal configuration file in the *File Type* list box :



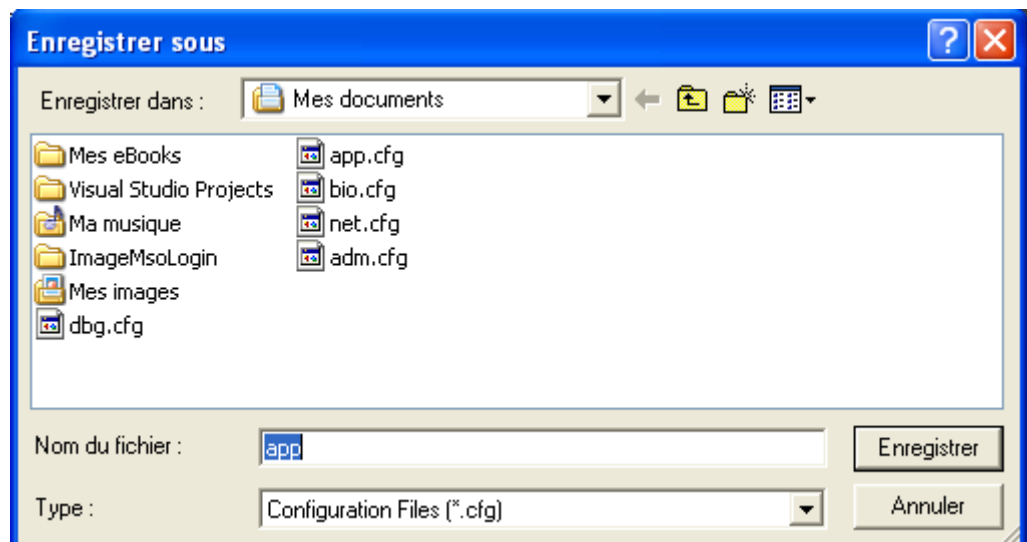
For example, we choose the *Application* configuration file.

- Display the terminal configuration file by clicking on the *Export File...* button. The *Export Configuration File* dialog window displays :



This dialog window displays the content of the selected terminal configuration file : under each section represented between '[' and ']' all its corresponding parameters with their values are displayed.

- You can also save the terminal configuration file in a file on your PC (USB storage key, hard disk ...). To save the file, click on the *Save File* button, then select the path where you want save the file and finally click on the “save button” (the name of this button depends on your PC language)



The file is saved as a binary file but it is composed of printed characters : in fact this file contains exactly the data displayed in the *Export Configuration File* dialog window. As a result, it can be opened as a text file later.

- Finally, click on the *Done* button to return to the main dialog window.

ADDITIONAL OPERATIONS GROUP BOX

Introduction

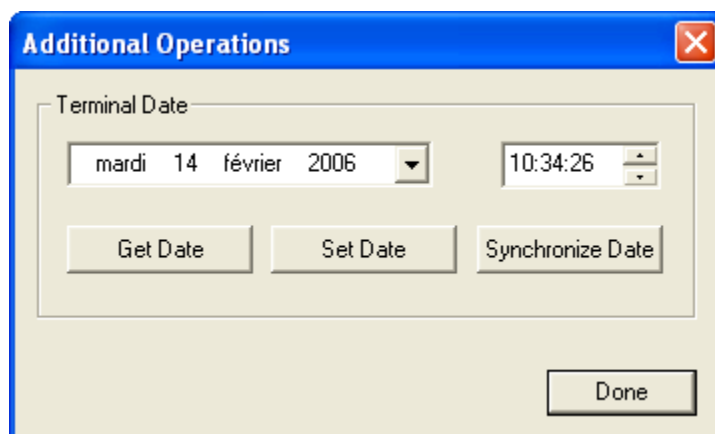
This group box allows performing :

- some additional operations on your terminal (only setting or getting terminal date for the current version)
- reboot terminal.

Additional Operations

First, under the *Additional Operations* group box, click on the *More...* button.

The *Additional Operations* following dialog appears on your screen :



For the current version, the only additional operations concern the terminal date.

Terminal Date group box

This group box allows :

- getting the terminal date and hour
- setting the terminal date and hour
- synchronize the terminal date and hour with the PC date and hour

Getting the terminal date and hour

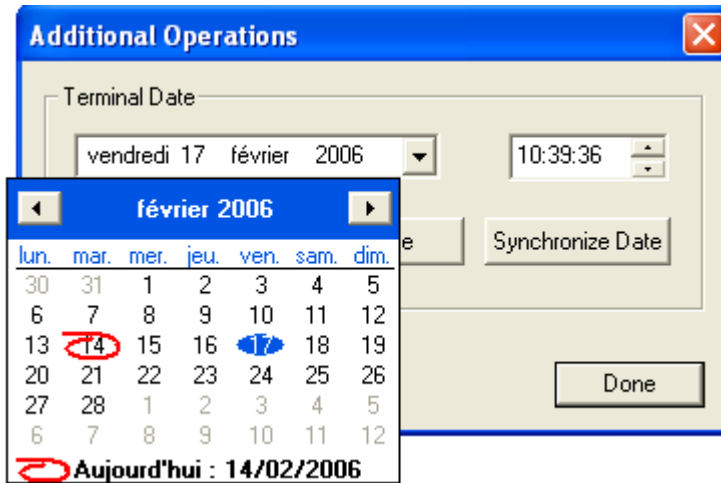
The process is the following :

- Click on the *Get Date* button
- The actual terminal date and hour display on the respective fields

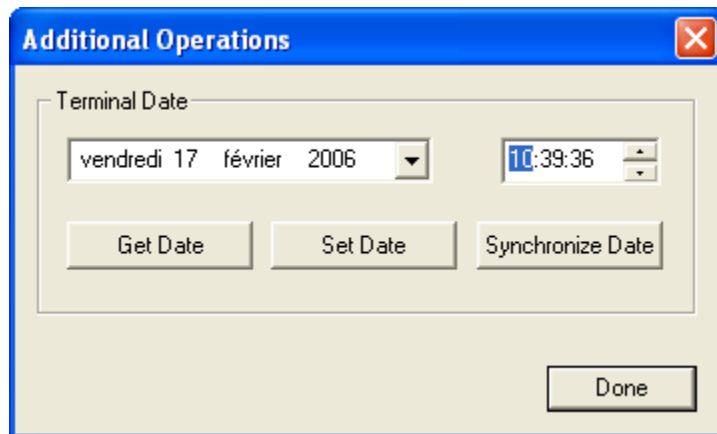
Setting the terminal date and hour

The process is the following :

- Set the terminal date in the date field calendar



- Set the terminal hour in the respective field



- Click on the *Set Date* button
- The terminal date and hour are set with these values.

Synchronizing the terminal date and hour

The process is the following :

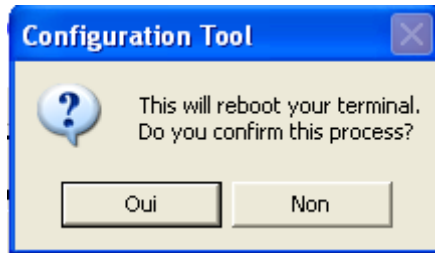
- Click on the *Synchronize Date* button
- The terminal date and hour are set with the PC date and hour

N.B. : To return to the main dialog window, click on the *Done* button.

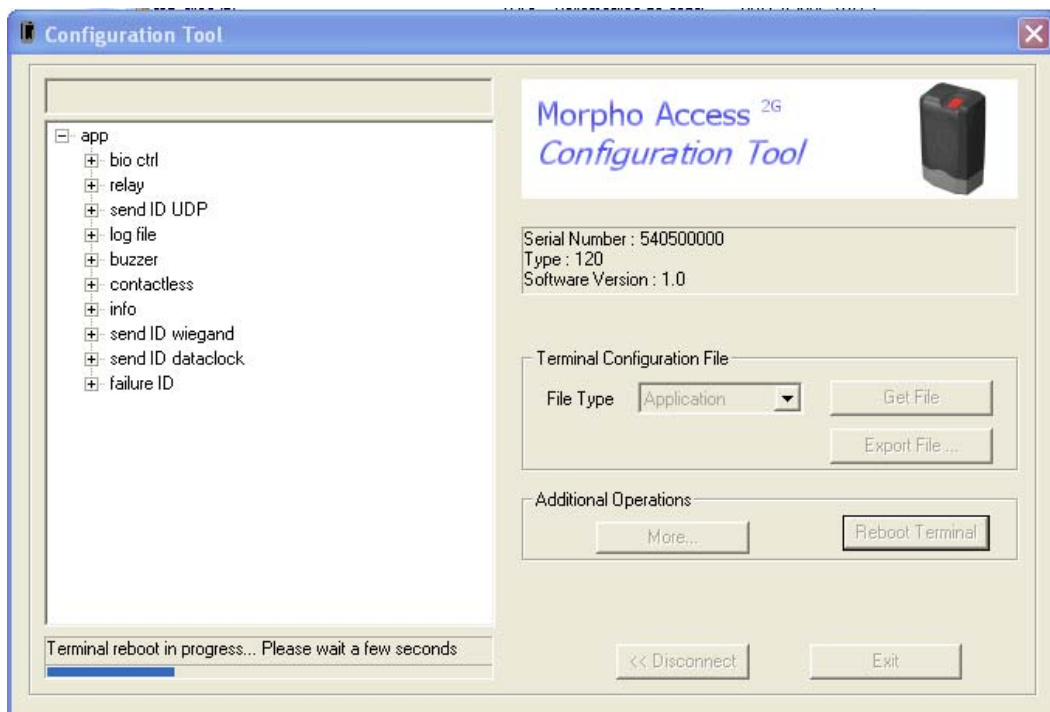
Reboot terminal

The process is the following :

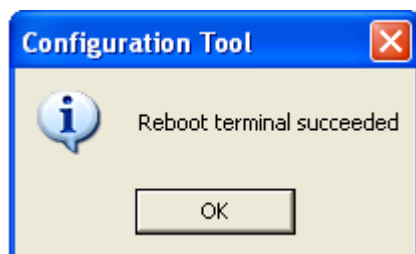
- Click on the *Reboot Terminal* button. The following message will appear on your screen :



- Click on the “yes” button (the name of this button depends on your PC language)
- The reboot process starts immediately. Under the file sections, a message “*Terminal reboot in progress... Please wait a few seconds*” displays and a progress bar displays and grows until the process runs.



- When the reboot process is completed, the following message appears on your screen :



- Finally, the file sections and actual parameter are cleared.

N.B. : It is also possible to reboot your terminal when you quit the application. The same first message displays and you can choose to reboot your terminal or not.



Siège social : Le Ponant de Paris
27, rue Leblanc - 75512 PARIS CEDEX 15 - FRANCE