



Sagem Défense Sécurité
SAFRAN Group

MorphoAccess™ 100 Series

USB Network Tool User Guide

Produced by SAGEM Défense Sécurité

Copyright ©2006 SAGEM Défense Sécurité

www.sagem.com

MA100 Series USB Network Tool User Guide
SK-0000043164-01

May 2006

Table of content

INTRODUCTION	5
SETTING-UP YOUR TERMINAL NETWORK PARAMETERS	6
STEP 1: SET THE NETWORK PARAMETERS ON A PC	6
STEP 2: SAVE THE NETWORK PARAMETERS ON A USB KEY	7
STEP 3: CONFIGURE YOUR TERMINAL	7

INTRODUCTION

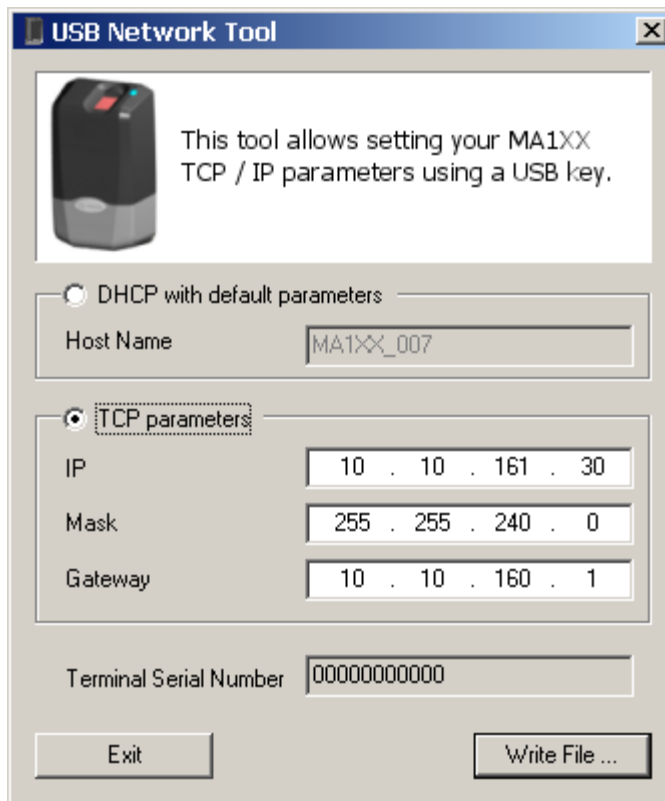
MorphoAccess™ 100 Series have no keyboard, no screen. However it is possible to change some parameters without connecting the terminal on a network. This operation requires only a standard USB Mass Storage Key.

SETTING-UP YOUR TERMINAL NETWORK PARAMETERS

This procedure offers an easy way to configure the network parameters (IP, Mask, Gateway) of a standalone MorphoAccess™ with unknown network address.

Step 1: set the network parameters on a PC

Launch *USB Network Tool.exe*



The *TCP parameters radio button* must be selected.

You can now choose your MorphoAccess™ new IP address, network mask and the network gateway.

The *Terminal Serial Number* is a 9 digits MA1XX serial number. If set to "000000000" the configuration will apply to all terminals: in current release this parameter cannot be changed.

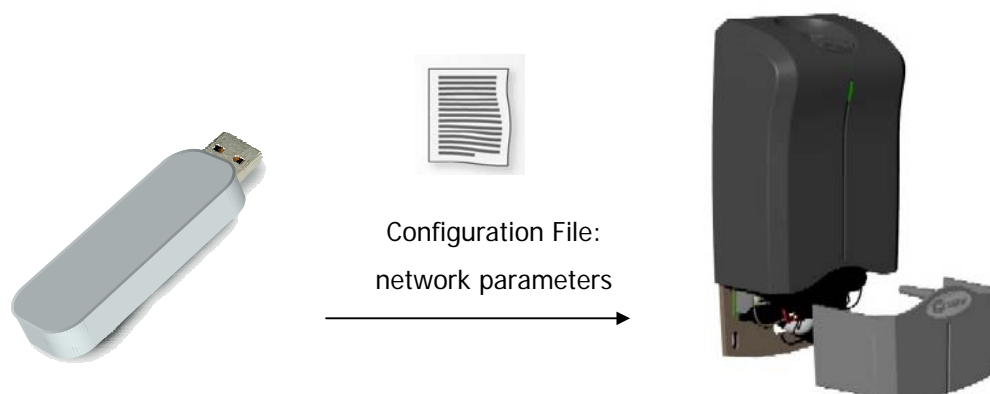
Step 2: save the network parameters on a USB key

Once selecting *OK* you will be able to save a file containing the new parameters on a USB key. The file can be saved anywhere on the key. A file named *address.csv* is created at the root: it contains the path of the configuration file.

- ! Warning! The file name cannot exceed 12 characters.
- ! Warning! The complete file path cannot exceed 56 characters.
- ! Warning! The key must FAT16 (FAT) formatted.
- ! The key storage capacity cannot exceed 512 MB.

After saving the file you can remove the USB key.

Step 3: configure your terminal



The terminal must be powered on.

Remove the lower protection of your terminal and access to the compartment.

You can plug the USB key. During the treatment the LED flashes purple quickly. The operation can last until 2 minutes.

Important: Do not plug out the USB key from the MorphoAccess™ during the treatment. SAGEM DS. will accept no responsibility for any damage that may result from a deliberate disconnection while the upgrade is performing.

At the end of treatment a low-pitched beep is emitted and the led flashes slowly. You can plug out the USB key: your terminal will reboot and apply new parameters.

SAGEM Défense Sécurité

Siège social : Le Ponant de Paris

27, rue Leblanc - 75512 PARIS CEDEX 15 - FRANCE