

SimpleID

Installation Instructions

TABLE OF CONTENTS

Copyright notice	3
Liability waiver.....	3
Introduction.....	4
Overview	5
Prerequisite software packages for SimpleID.....	6
Installing SimpleID on one PC	7
Installation of SID GUI and Controller Communication Service :	7
Installing SimpleID on multiple PCs	12
Database Server configuration:	12
Installation of SimpleID on the main PC	12
Additional SimpleID Workstation Installation:	16
Multiple PC installation block diagram	20
Configuring HID VertX and Edge	21
Firewall configuration	23

Copyright notice

All rights reserved. This work or any of its parts may not be reproduced in any form and by any means (including, but not limited to copying, printing, photocopying and digitizing) without the written permission of Midpoint Security, UAB.

Liability waiver

This document has been prepared with accuracy and care, however, Midpoint Security assumes no responsibility for any errors or omissions and may not be held responsible for any damages resulting from the use of this document or from the use of software or hardware products described in this document. In no event shall Midpoint Security be liable for lost profits, opportunities or any other damage caused or alleged to have been caused directly or indirectly by this document of the products described herein.

Introduction

SimpleID is an innovative access control software that supports HID Edge & VertX, Mercury EP-1501/1502 and Suprema biometric IP readers and controllers.

SimpleID has been designed with the goal of providing a simple and at the same time highly effective interface to enable users of all levels to have a complete control over the system.

SimpleID is made and supported by Midpoint Security located in Kaunas, Lithuania (EU).

For more product information and support, please visit our web site <http://www.midpoint-security.com/>

Overview

SimpleID software consists of 2 components:

1. SID Controller Communication Service
2. SID Graphical User Interface

SID Controller Communication Service is used to communicate with hardware devices such as HID VertX controllers and Edge readers. It sends configuration, cards and commands, and retrieves events from hardware devices. There are no user adjustable settings in this program. It will start automatically every time your PC boots up. If you wish to verify whether SID Controller communication Service is functioning, you may do so by viewing Windows Task Manager and checking if SIDController.exe process is running.

SID Controller Communication Service should be installed on only one computer.

SID GUI is a Graphical User Interface which is used to configure communication settings, users, cards, doors, access groups, time schedules etc. It also has Monitoring feature, which is used for live monitoring of system events, and report generation ability.

SID GUI may be installed on multiple computers.

Prerequisite software packages for SimpleID

Below is the list of software packages that should be installed prior to SimpleID installation.

For server (or stand-alone) computer installations:

1. All versions of Microsoft .NET Framework up to the latest version (e.g. 1.0, 1.1, 2.0, 3.0, 3.5 SP1 etc.).
2. Microsoft SQL Server 2005 Express Edition. The 2008 version and non-express editions are also supported.
3. “Bonjour Print Services for Windows” should be installed only if you plan on using Mercury controllers and want them to be automatically detected by the software.

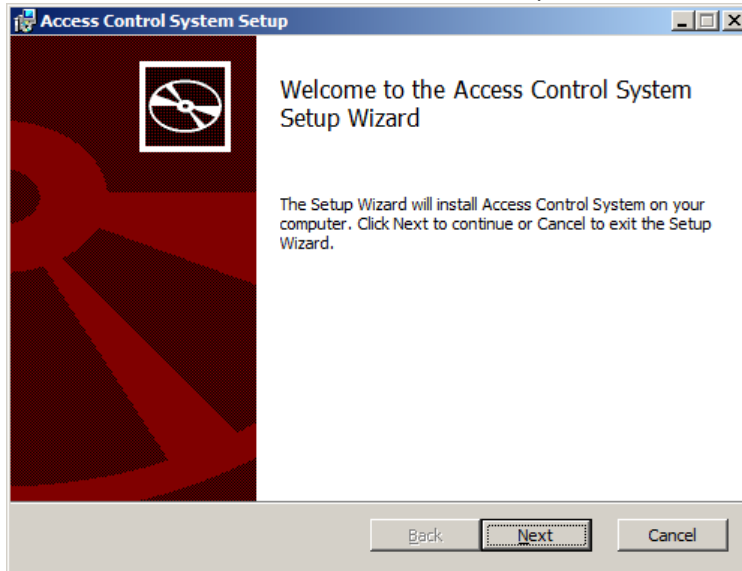
For client computer installations:

1. All versions of Microsoft .NET Framework up to the latest version (e.g. 1.0, 1.1, 2.0, 3.0, 3.5 SP1 etc.).
2. Microsoft SQL Server Native Client (this component is included in the MS SQL Server installation package or can be downloaded separately from the Microsoft website).

Installing SimpleID on one PC

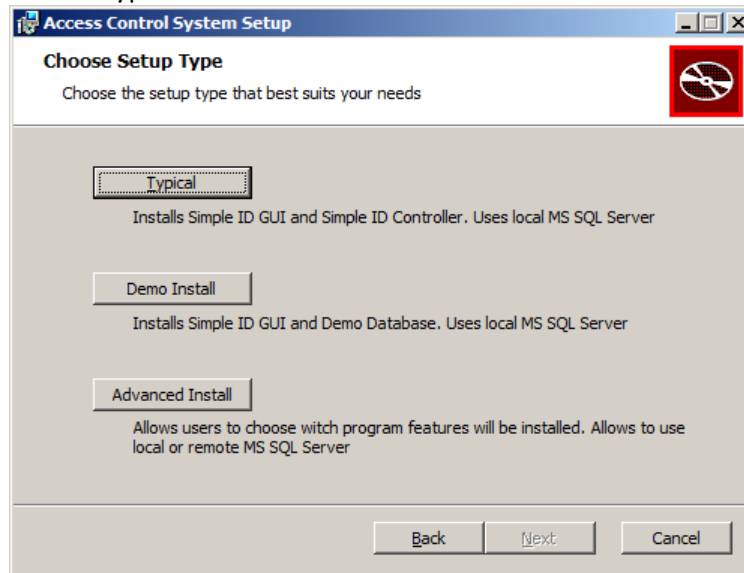
Installation of SID GUI and Controller Communication Service :

1. Make sure the prerequisite components are installed.
2. Execute the file called "SID Install.msi".
3. Press "Next" in the first window of the setup.

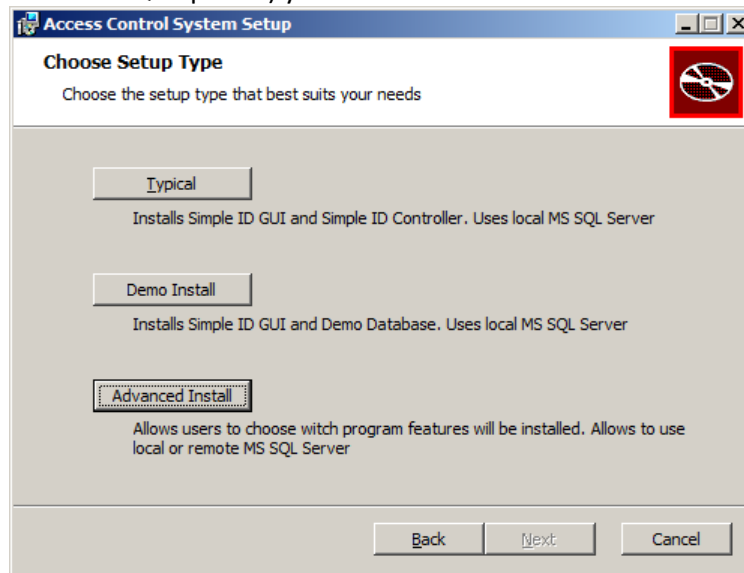


4. Select the type of the installation:

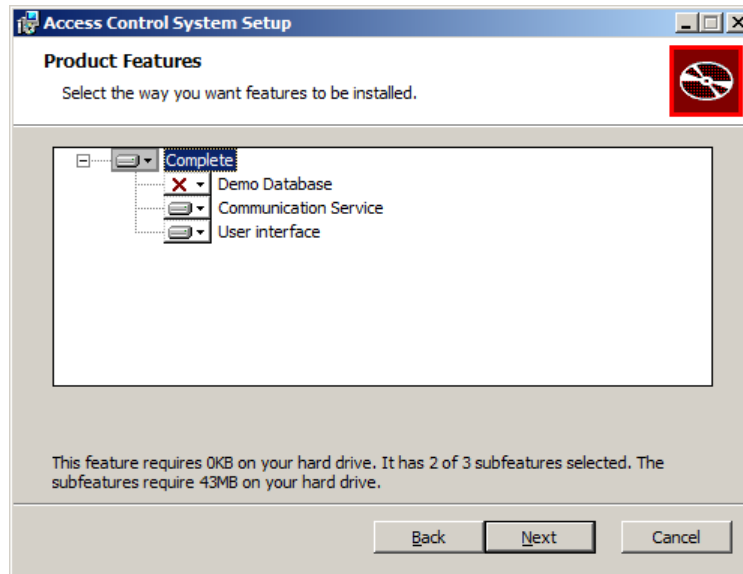
4.1. If you have installed MSSQL Server Express edition with default settings you should select “Typical” installation.



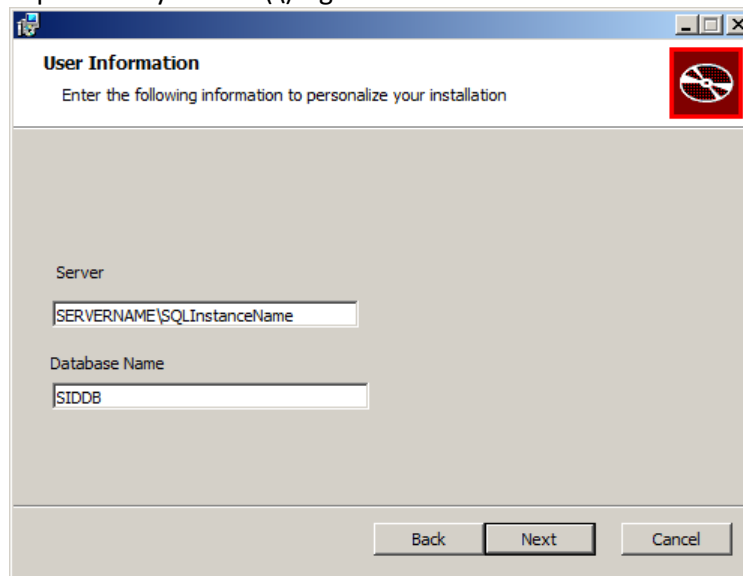
4.2. If you have installed a different version of MSSQL Server (instance name is not the default “SQLExpress”) you should select “Advanced Install”.



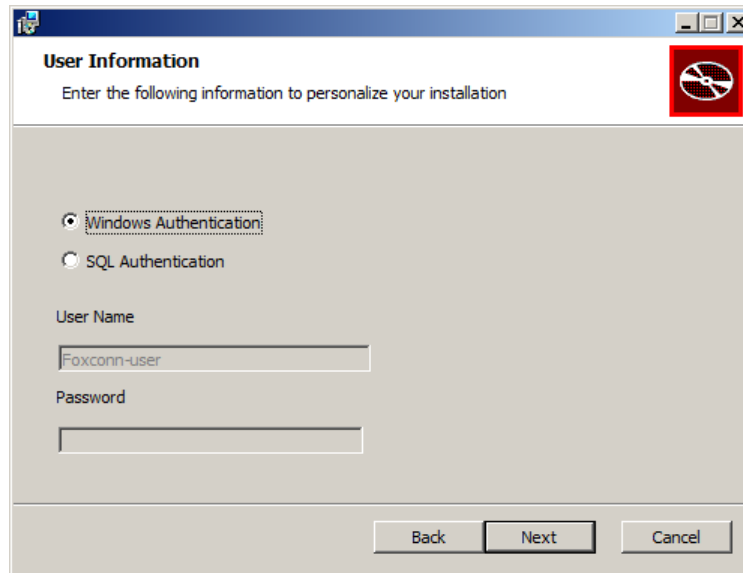
4.2.1. Leave the default options selected and press “Next”.



- 4.2.2. Enter database connection parameters. In the “Server” field you should enter your computer network name and the Instance name of the SQL server installation separated by a slash (\) sign. You can leave the database name unchanged.



- 4.2.3. Leave default options selected and press “Next”.



User Information
Enter the following information to personalize your installation

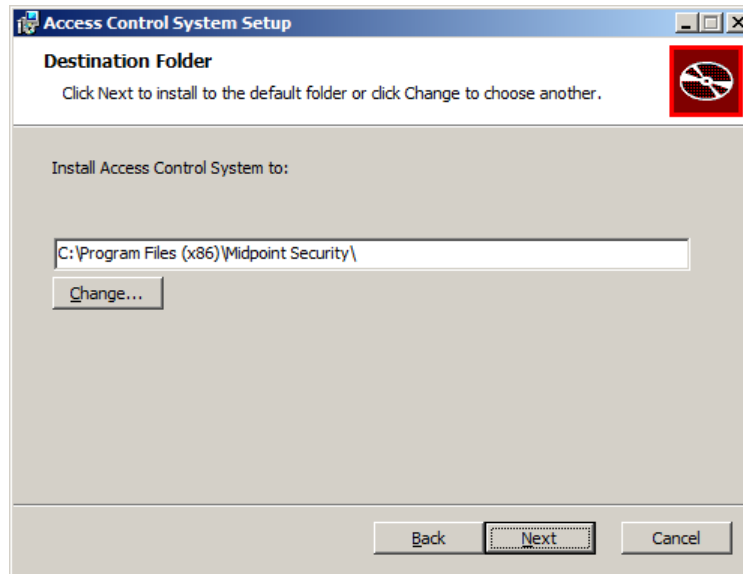
Windows Authentication
 SQL Authentication

User Name
Foxconn-user

Password
[Empty field]

Back Next Cancel

4.2.4. Press "Next".



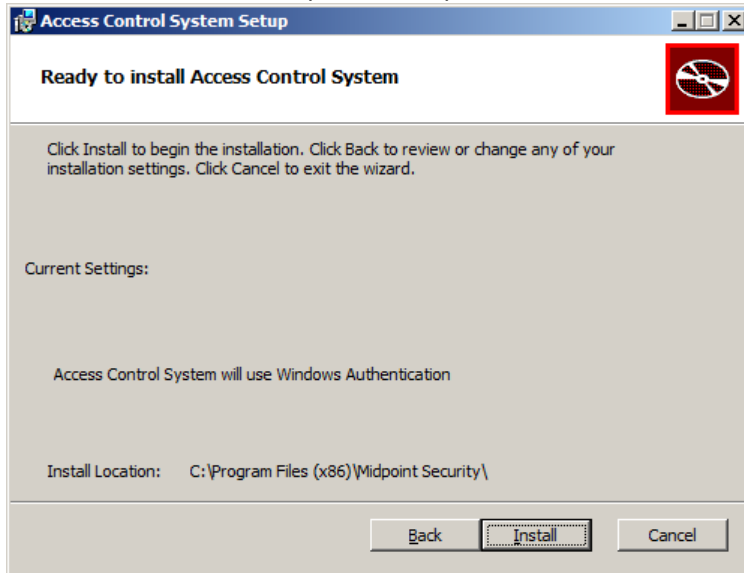
Access Control System Setup
Destination Folder
Click Next to install to the default folder or click Change to choose another.

Install Access Control System to:

C:\Program Files (x86)\Midpoint Security\
Change...

Back Next Cancel

5. Review the installation options and press “Install” to start installing.



6. Once the installation completes click “Finish”.

That's it! You have successfully installed SimpleID.

Installing SimpleID on multiple PCs

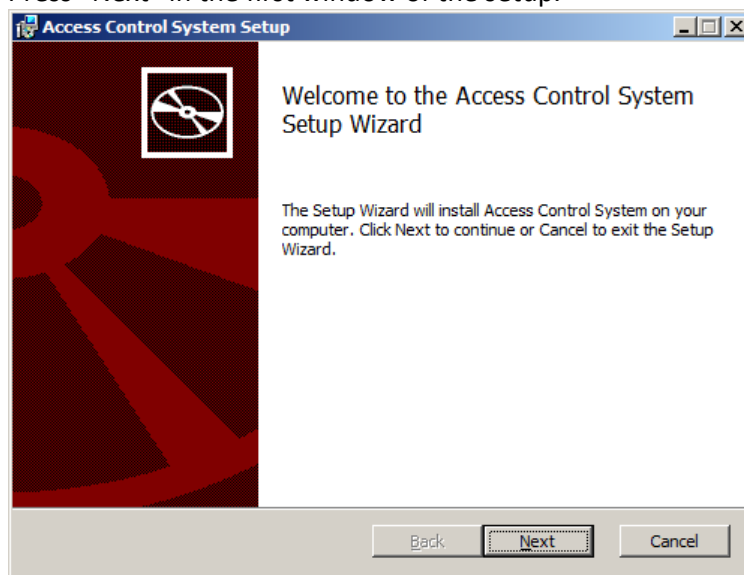
Database Server configuration:

You should install MSSQL Server only on one computer in your network.

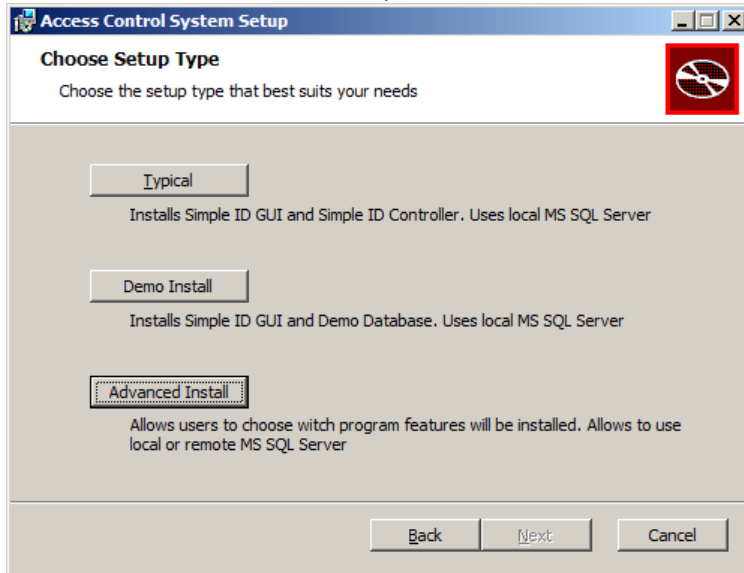
After you have installed Microsoft SQL Server you should enable remote connections to the server and configure a user for SimpleID (please read "SIDAN00001" application note for SQL user configuration).

Installation of SimpleID on the main PC

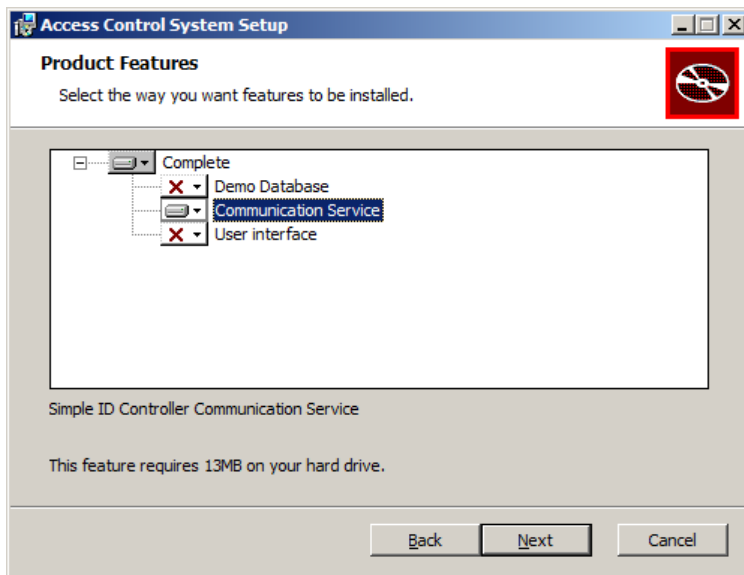
1. Make sure the prerequisite components are installed.
2. Execute the file called "SID Install.msi".
3. Press "Next" in the first window of the setup.



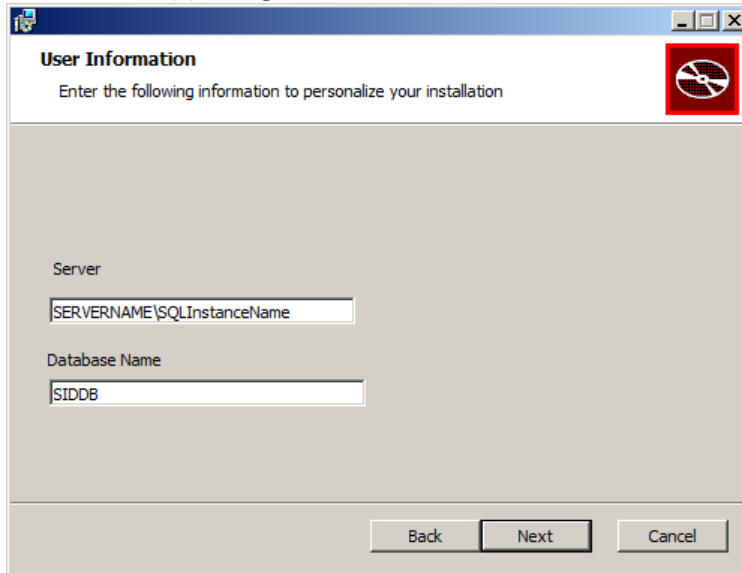
4. Select the “Advanced Install” option.



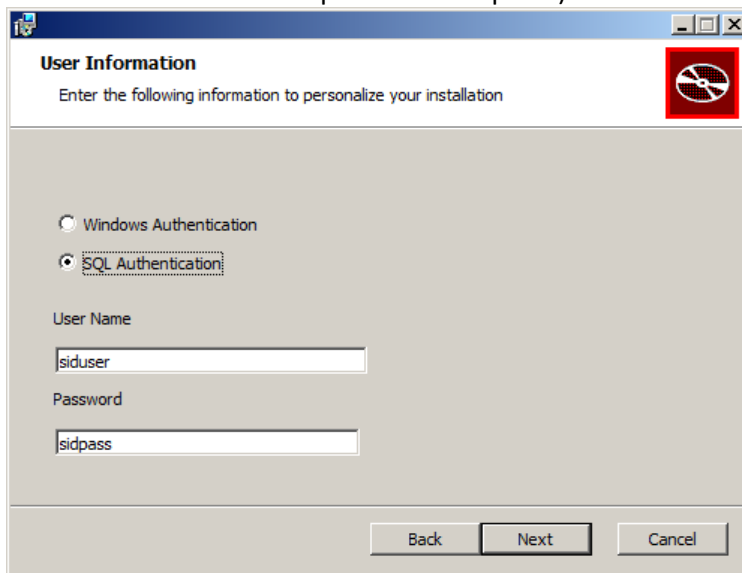
5. If the server computer will be located in a server room, and not used for every-day administration of the access control system it is enough to install just the Communication Service component.



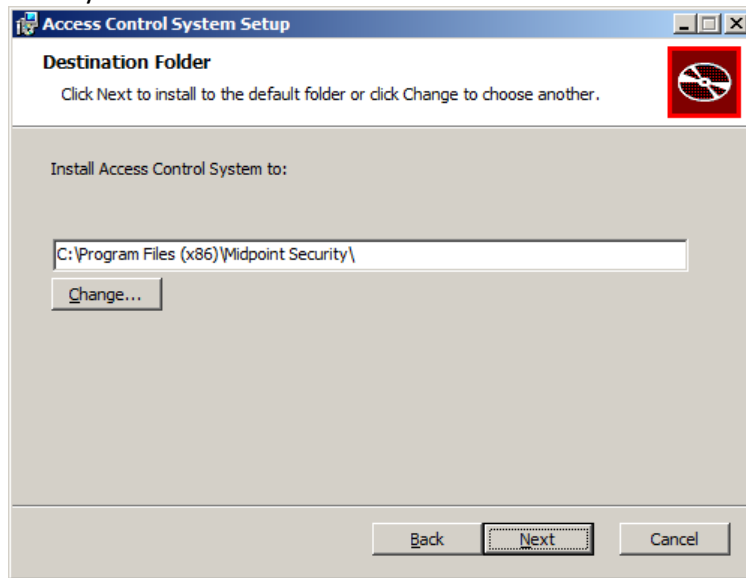
6. Enter the database connection parameters. In the “Server” field enter the network name of the server computer and the Instance name of the SQL server installation separated by a slash (\) sign. You can leave the database name unchanged.

A screenshot of a Windows-style dialog box titled "User Information". The subtitle reads "Enter the following information to personalize your installation". The dialog contains two text input fields: "Server" with the placeholder text "SERVERNAME\SQLInstanceName" and "Database Name" with the placeholder text "SIDDDB". At the bottom, there are three buttons: "Back", "Next", and "Cancel". A red square icon with a white circle and a diagonal slash is located in the top right corner of the dialog's main area.

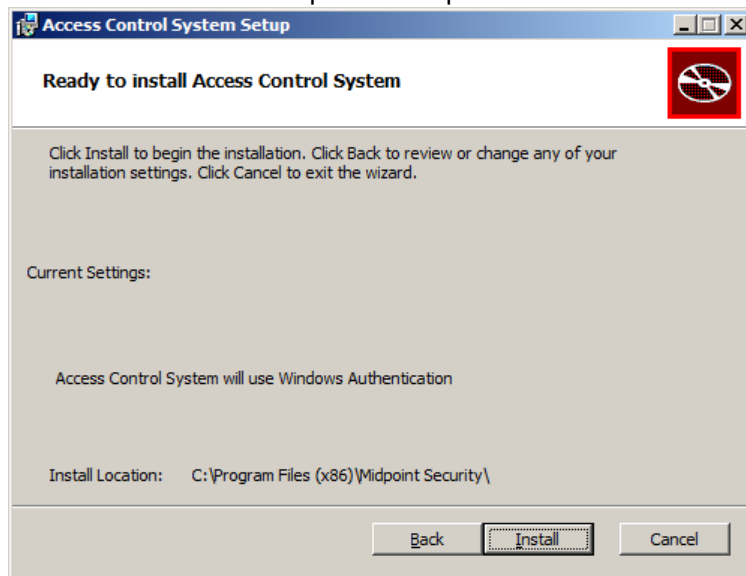
7. In this window you have to select the “SQL Authentication” option and enter the username and password of the user, that you have configured in the MS SQL Server (in our case the user is “siduser” with the password “sidpass”).

A screenshot of the same "User Information" dialog box. In this view, the "SQL Authentication" radio button is selected, and the "User Name" field contains the text "siduser" and the "Password" field contains the text "sidpass". The "Back", "Next", and "Cancel" buttons are visible at the bottom. The red square icon with a white circle and a diagonal slash remains in the top right corner.

8. If needed, change the path where SimpleID program files should be installed. Press “Next” when you are done.



9. Review the installation options and press “Install”.



10. Once the installation completes click “Finish”.

That's it! You have successfully installed SimpleID.

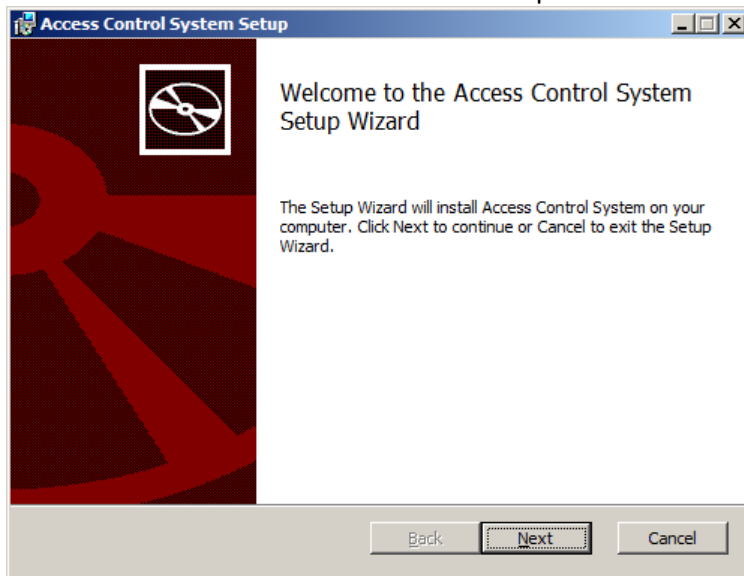
* Note: For simple installations, you may use a standard office computer as the database server. For large commercial installations it is recommended to use a server-class computer.

** Note: It is recommended to keep the database server turned on at all times. If the database server is turned off, no other computers in the system will be able to start/run SID software.

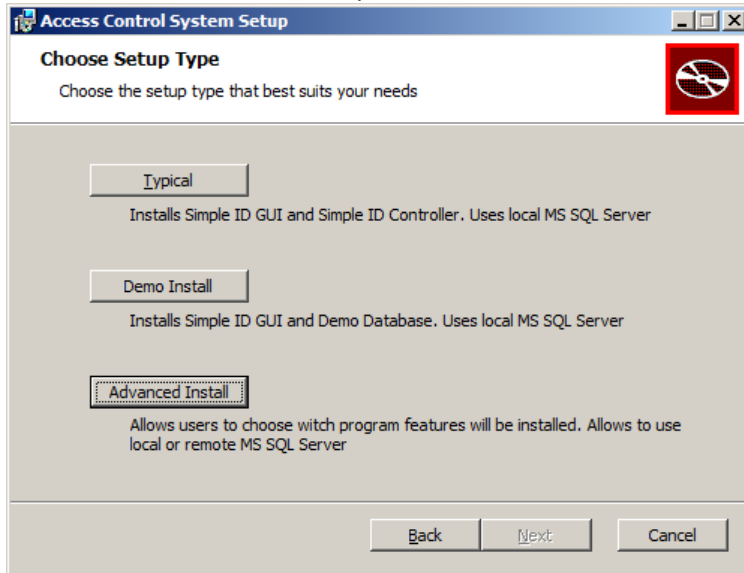
*** Note: The operating system of the database server determines how many client computers will be allowed. If you have MS Windows Home Edition installed on the database server, you will be able to connect 5 Clients. If you have MS Windows 2000 or XP Professional on the database server, you will be able to connect 10 Clients. If you have MS Windows Server Edition, you will be able to buy additional client licenses and connect as many clients as you need. These limitations are imposed by Microsoft, not by Midpoint Security.

Additional SimpleID Workstation Installation:

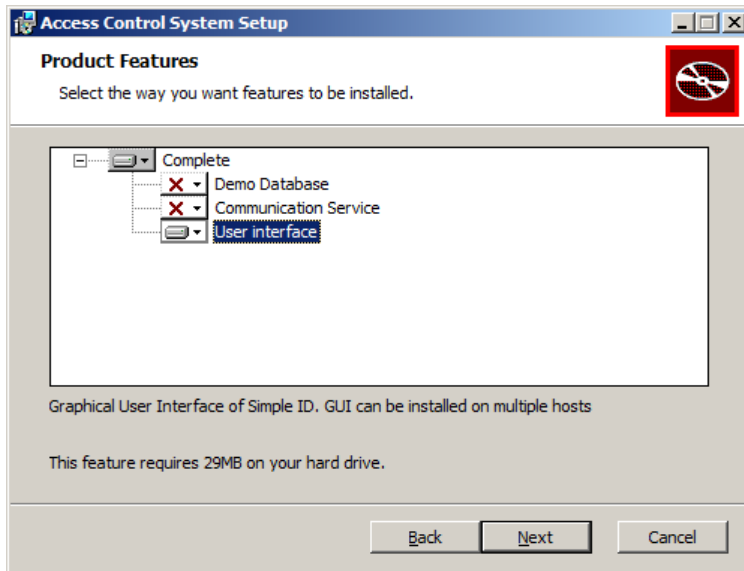
1. Make sure the prerequisite components are installed.
2. Execute the file called "SID Install.msi".
3. Press "Next" in the first window of the setup.



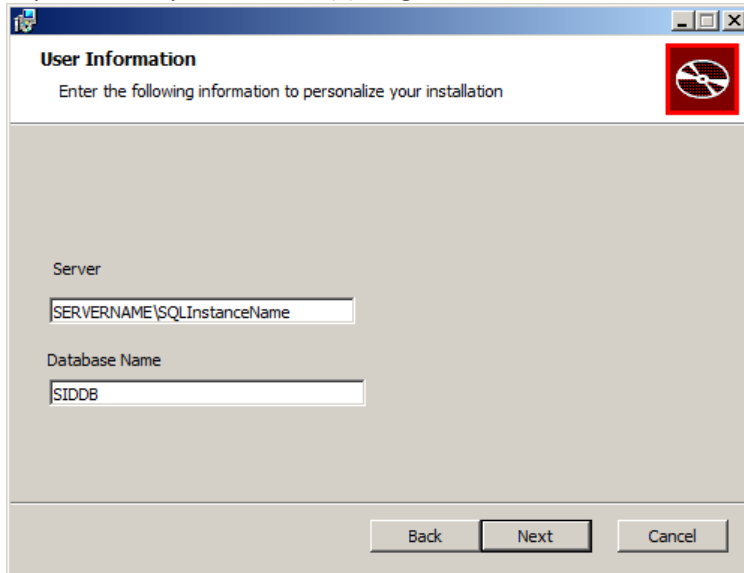
4. Click on “Advanced Install” option.



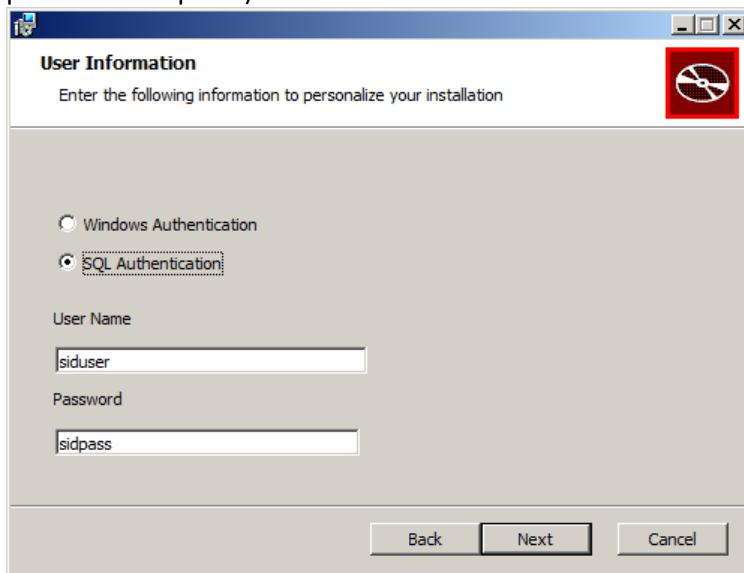
5. For workstation installation you only need to select the “User Interface” package. Note: **SID Communication Service should be installed on only one PC.** If you installed it on the database server, do not install it on any of the workstations. If you did not install it on the database server, you should install it on one of the workstations. The PC with SID Controller Communication Service installed should be turned on at all times.



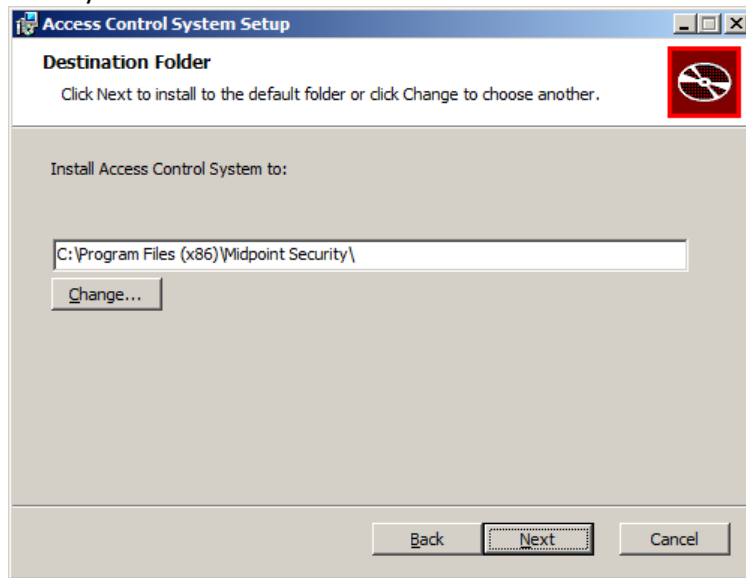
6. Enter the database connection parameters. In the “Server” field you should enter the network name of the server computer and the Instance name of the SQL server installation separated by a slash (\) sign. You can leave the database name unchanged.

A screenshot of a Windows-style dialog box titled "User Information". The subtitle reads "Enter the following information to personalize your installation". The dialog contains two text input fields: "Server" with the placeholder text "SERVERNAME\SQLInstanceName" and "Database Name" with the placeholder text "SIDDDB". At the bottom, there are three buttons: "Back", "Next", and "Cancel". A red square icon with a white globe is located in the top right corner of the dialog's main area.

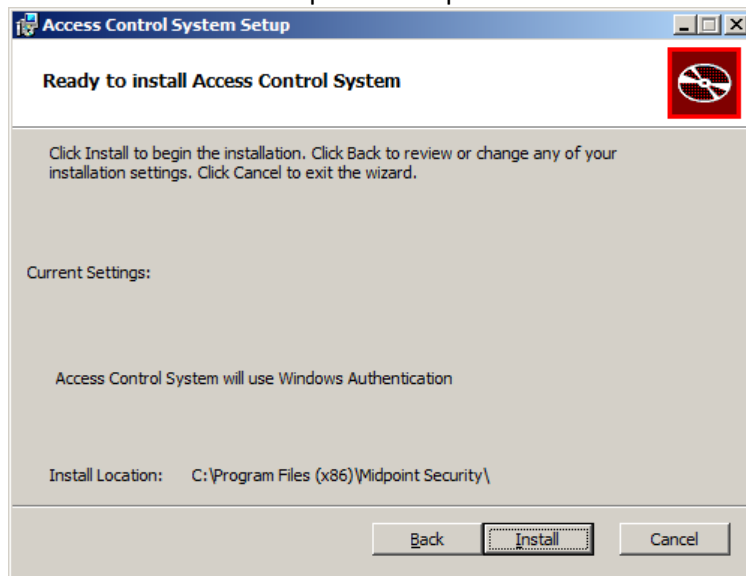
7. Select the “SQL Authentication” option and enter the username and password of the user, that you have configured in MS SQL Server (in our case the user is “siduser” with the password “sidpass”).

A screenshot of a Windows-style dialog box titled "User Information". The subtitle reads "Enter the following information to personalize your installation". The dialog contains two radio button options: "Windows Authentication" (unselected) and "SQL Authentication" (selected). Below these are two text input fields: "User Name" with the text "siduser" and "Password" with the text "sidpass". At the bottom, there are three buttons: "Back", "Next", and "Cancel". A red square icon with a white globe is located in the top right corner of the dialog's main area.

8. If needed, change the path where SimpleID program files should be installed. Press “Next” when you are done.



9. Review the installation options and press “Install”.



10. Once the installation completes click “Finish”.

That's it! You have successfully installed SimpleID.

Multiple PC installation block diagram

Configuring HID VertX and Edge

Controller network setup depends on the configuration of your network. You may use either DHCP server or assign static IP addresses to controllers. If the controller is on a different segment of the network, you must enter gateway addresses as well. HID VertX/Edge manuals contain detailed configuration instructions.

***** Important:** In the CS/Host IP address field you must enter the IP address (or PC name, if using DHCP) of the computer where SID Controller Console is installed.

In order to test network configuration you should check:

1. If the controller responds when you ping it's IP address (or name) from the PC where SID Controller Console software is installed.
2. If the PC with the SID Controller Console responds when you ping it's IP address.

Firewall configuration

When installing a system in a corporate network environment you may require assistance from a network administrator to open TCP ports used for communication between SID workstations and hardware components.

MS SQL Server: 1433 TCP and 1434 UDP

HID Edge/VertX controllers: 4050 and 4070 TCP

Mercury controllers: 3001 TCP

Suprema IP readers: 1470 and 1471 TCP